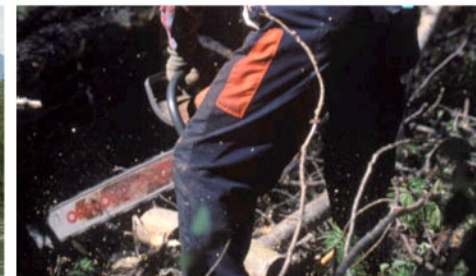




***MANAGING BC FORESTS FOR
VALUE AND SUSTAINABILITY***

***Are we or will we be practicing
SFM?***

Sustainable forest management (SFM) is concerned with maintaining the long-term health of forest ecosystems while providing environmental, economic, and social opportunities for present and future generations.



Sustainable Forest Management Montreal Process

- To develop and implement internationally agreed-upon criteria and indicators for the conservation and sustainable management of temperate and boreal forests
- 7 criteria & 54 indicators
- Adopted by BC Government



- **Government** - British Columbia is an international leader in sustainable forest management
- **Industry** – supports Government position
- **ABCFP** – mandate is to ... uphold principles of stewardship of forests, forest lands, forest resources and forest ecosystems

***ARE THESE SUPPORTED THROUGH OUR SFM SYSTEM,
PROCESSES & ANALYSES?***



Political components

- Abdicating leadership role in long-term forest stewardship
 - Off-loading responsibilities to industry, professionals & Government established NGOs
 - Lacking overall direction & performance – Ref Auditor General reports
- Pleading poverty
- Focusing on:
 - Program maintenance
 - Low risk minor improvement projects
 - Projects with direct short-term political benefits
- Reducing staff and budgets – especially related to monitoring

Legislative & Technical components

- Legally binding BC forest vision & goals – do not exist
- State of Forest Report – lacking goals & targets to measure performance
- Montreal Process C&I – performance on 50% of indicators inadequate
- FRPA – inadequate relative to non-timber SFM requirements & resource targets
- Professional Reliance – lacks adequate public oversight
- FPB – mandate limited to FRPA & Wildfire Act – not SFM
- Forest certification – frequently based on non-scientific based measures
- Resources inventory – inadequate budget (\$8.0M/yr cf \$15M/yr advised)
- Climate change strategy – minimal operations action regarding implementation



Public components

- Public trust – lacking relative to Government & industry
- Professional Reliance – lacks public understanding & oversight
- Public input system – limited & dependent upon issues achieving public outcry level (crisis management)

- **Government** - British Columbia is an international leader in sustainable forest management
- **Industry** – supports Government position
- **ABCFP** – mandate is to ... uphold principles of stewardship of forests, forest lands, forest resources and forest ecosystems

WELL, DOES OUR SYSTEM & PERFORMANCE JUSTIFY THESE STATEMENTS NOW & IN THE FUTURE OR DOES IT JUST GIVE US A “WARM AND FUZZY” FEELING BY CONTINUING TO SAY WE ARE?

